

GALERIE CAROLE DECOMBE

Paris - Los Angeles

GALERIE CAROLE DECOMBE

DECORATIVE ARTS & DESIGN

Paris

30 rue de Lille
75007, Paris
France

Los Angeles

Venice
California, 90291
United States



Carole Decombe

The Galerie Carole Decombe offers a selection of fine furniture and objets d'art mainly from Scandinavia but also presents contemporary artists' works. Carole Decombe opened her first gallery in 2007, in the suburbs of Paris where she presented an eclectic choice of antiques. She then followed with her gallery in Paris, Rue de Lille, in 2011 among the galleries of the Carré Rive Gauche. 2016 marked a major direction with the opening of Galerie Carole Decombe in Los Angeles.

You might wonder how she comes to be here in the heart of Paris, in the artistic center for collectors and here in Los Angeles in the heart of the design district. After studies in history of art at the Ecole du Louvre, specializing in architecture and decoration of large mansions and houses, Carole Decombe's first job was not very far away from her gallery in the Carré Rive Gauche, working for an antique dealer on quai Voltaire. As a buyer, Carole spent a lot of time at public sales in Paris, particularly in the Drouot auction rooms, and this is where her passion for art, and her eagerness to search for rare items really began and where she gained an educated eye.

Her universe today is split between Paris and Los Angeles. The galleries celebrate a selection of artists whose core motivation of their artistry encourage a dialogue between fine art, craft and creativity. Carole always selects 18th - 20th century rare Scandinavian furniture and curates it with decorative arts of the 21st century to create a harmonious dialogue. Both of her spaces are an invitation to discover what would be described as her artistic convictions. "I am fascinated with the creative process and the narrative behind it - the core of craftsmanship. Artwork represented in my gallery showcases the refinement of authentic hand-made objects of art. My collaboration with the artists all encompassing informs my vision as a gallerist."

Carole continually looks for authenticity in her work, the simplest way of passing on this unceasing emotion at an object, a creation, a person. She likes to set the stage, boldly putting things together, mixing the decorative arts of the modern period with contemporary pieces. This is why she knew, when she opened the gallery that bears her name on 30, rue de Lille that creators had to be part of her story. Since then she acclaimed the work of several artists as Isabelle Sicart, Helle Damkjaer, Emmanuel Levet Stenne, Nicolas et Sebastien Reese, Diana Lui... convinced of their talent and their artistic sincerity, without forgetting the beautiful works of the past.



Viggo Kyhn, floor lamp



"Tank" armchair



Carl Malmsten, table



Jean Gillon, sofa

Caroline Scholl

For 20 years, Caroline Scholl, who trained at the Nancy School of Fine Arts, has put her creativity to work for Lalique, where she was head of the design office. In 2015, she founded Secret d'Alchimie, a studio where she experiments with her favorite material: glass.

Caroline Scholl enjoys the challenge of combining glass with other materials. She likes working with glassmakers, wrought-iron artisans and leatherworkers to bring people and materials together and develop her rich, inventive vision of fine crafts.

She creates amazing pieces for interior designers as well as new kinds of objects for home fragrances.





"La Vague" screen





"Ondine" bas relief





"Ondine" bas relief





Emmanuel Levet Stenne

Born in 1969, Emmanuel Levet Stenne lives and works in the Fontainebleau area. After studies in design at the ENSCI/Les Ateliers in Paris, and being initiated to metal work, he joined Eric Schmitt's team in 2001.

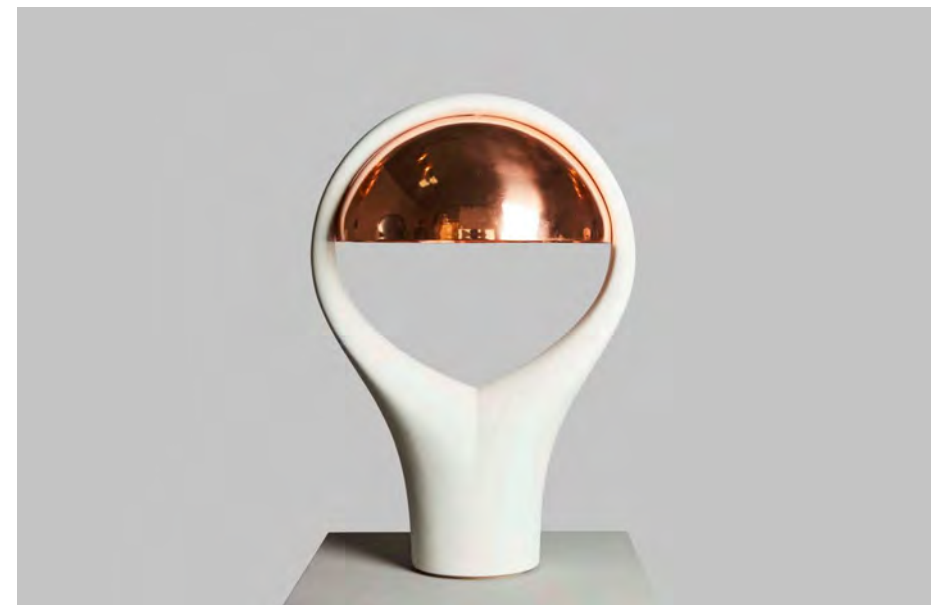
Since 2014, he has been creating his own pieces of furniture and lighting. He has also worked with ceramist Isabelle Sicart to design two series of consoles and side tables.

Emmanuel Levet Stenne's design is guided by a search for simplicity and balance. This is where shapes, materials and technical processes must meet, he says.

His works explore the language of materials, mixing brass with stone, wood or glass. He collaborates with craftsmen to polish and soften the alabaster or marble and carve out a roundness, almost an emotion. Bronze and aluminium are often the structure of his pieces, they are casted to obtain fluid forms, their curves shape contemporary, elegant and refined pieces.



"Night Cup" table lamp



"Clarisse" table lamp



"Cap" table lamp



"Head Light" table lamp



"Capucine" table lamp

Alabaster sconce



Onyx sconce





Alabaster and onyx sconce



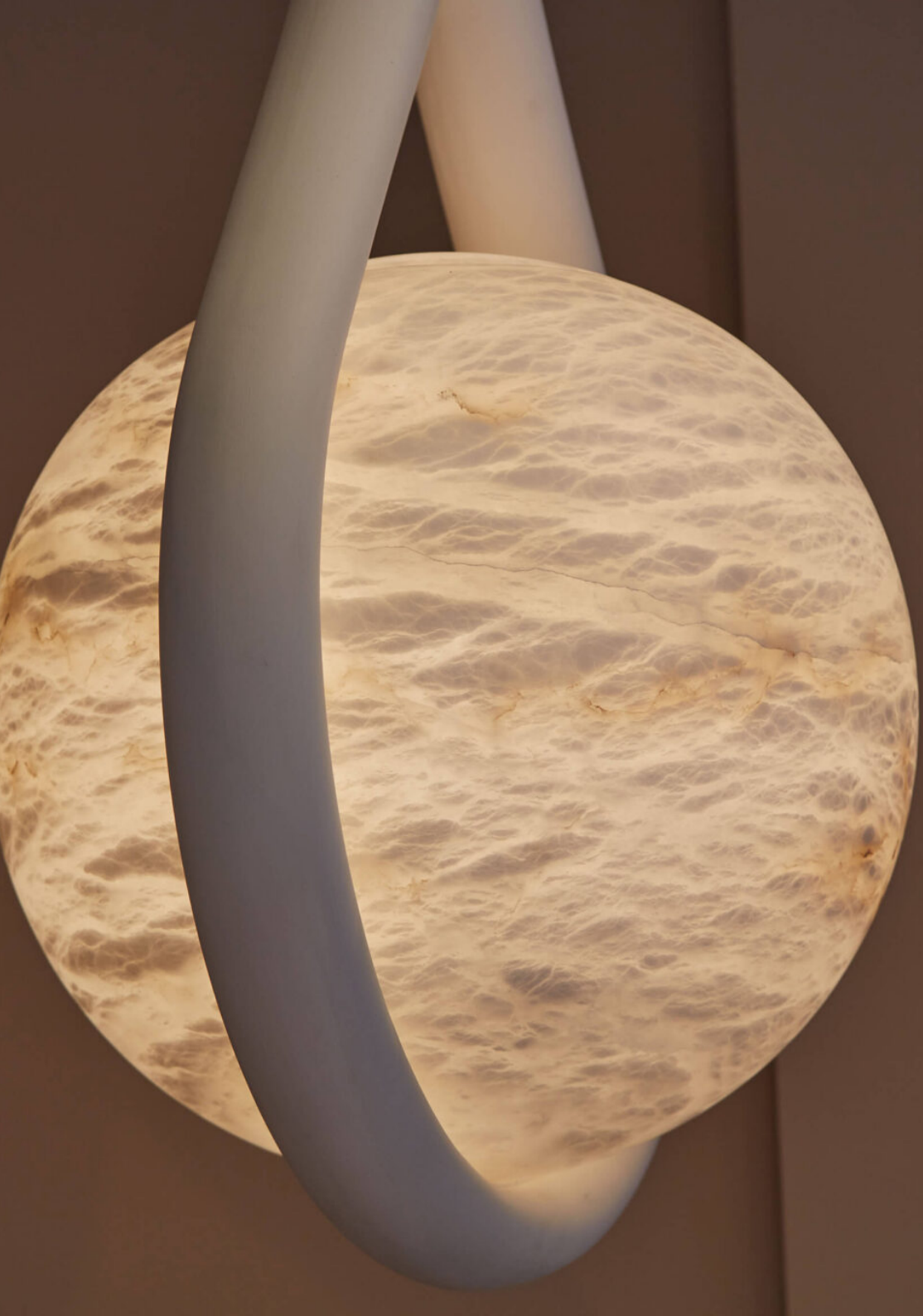
"Kuros " sconce



Alabaster and pink quartz sconce



Belgium blue stone sconce



"Full Moon" pendant



Chandelier



Alabaster hanging light



"Elytre" hanging lights





"Dome" hanging light





"Tie" floor lamp





"Palm" floor lamp



"Edge" floor lamp





"Shade" hanging light





"Shade" coffee tables



"Shade" console





"Bolchoi" consoles





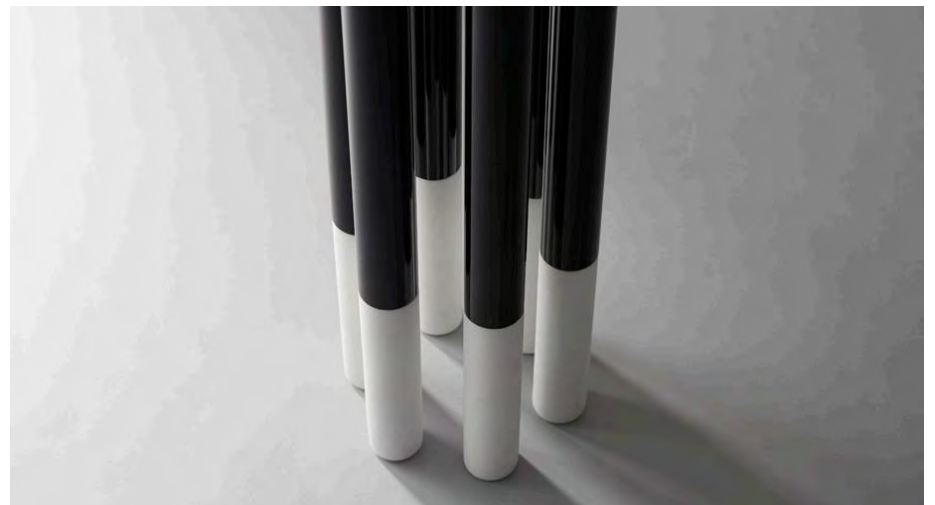
"Loop" stand



"Loop" stand



"Bolchoi" stand





"Elytre" consoles



"Pavane" consoles





"Elytre" stands





"Tail" stand



"Tail" stand

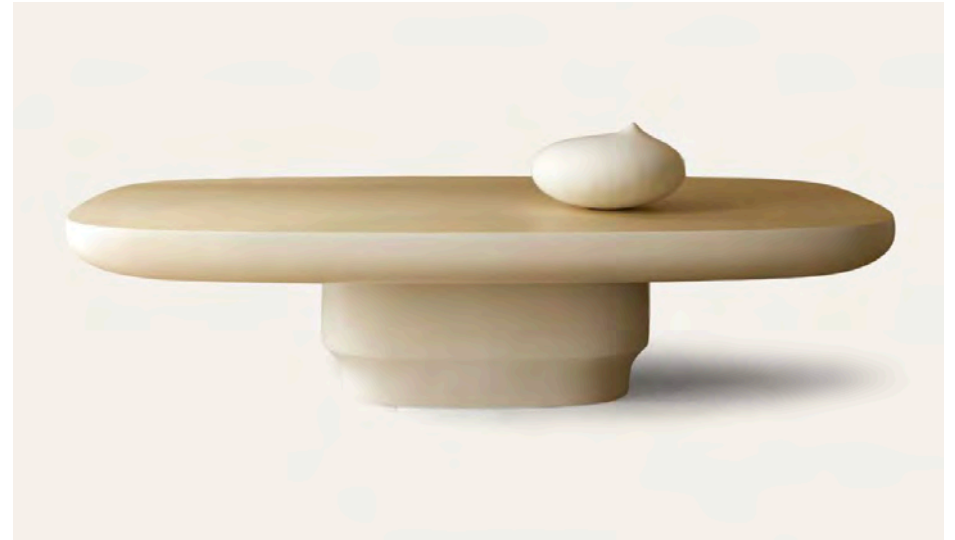




Set of coffee tables



"Fado" coffee table



"Flush" coffee table

"Flush" coffee table



"Flush" desk



"Volta" side tables



"Elytre" center table



"Spin" center table



"Shield" dining table



Winged 1" dining table



"Winged 2" dining table



"Bronze Shirdl" dining table

Ethan Stern



Ethan Stern is an American glass artist, born in Ithaca, New York, and now based in Los Angeles. A graduate in sculpture from Alfred University, he combines traditional craftsmanship and contemporary design to create unique pieces where light and material interact. His works, featured in prestigious collections such as the Corning Museum and Glasmuseet Ebeltoft, explore the balance between function, beauty, and emotion. By blowing and engraving glass, Ethan Stern transforms it into a visual and tactile experience, inspired by nature and artisanal heritage.



"Flora Cut" sculpture





"Crosscut Weft" sculpture



"Crosscut Striation Rose" sculpture

Godeleine **de Rosamel**



Born in 1968 in Lille France, Godeleine de Rosamel lives and works in Los Angeles. After graduating from ERG (Ecole de Recherche graphique) in Brussel, she worked as a painter and illustrator for 10 years in Paris. Since moving in 2011 in Los Angeles, she started working with ceramics full time and is currently collaborating with several galleries in the US. She likes that her work let her play first at being the original creator of imaginary life forms and then at enacting the evolutionary process by which they struggle to adapt and perfect themselves. After spending so much time watching how the animals were growing and evolving, she realized that it was time to give them their own biotope of plants and trees, that hopefully will develop and mature in relationship with them. Creating the plants proves as complicated as creating the animals. Of course, all life forms are sophisticated and there is no reason for the vegetal kingdom to be any easier to imagine and create than the animal one. This new development in her work follows Godeleine's interest in natural history, evolution and the wonders of Nature in general.

"Green" sculpture

"Pinky Black" sculpture





"Plant" sculpture



"2005" sculpture



"2011" sculpture



"Whites" vase



"Purple Pink" dish



"Petal" dish



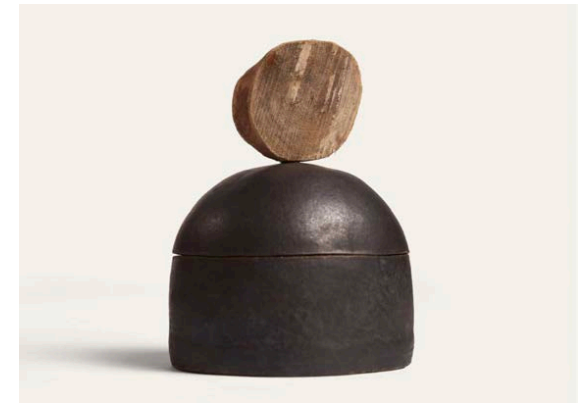
"Flora #10" sculpture



"#821" box



"#19" box



"#1" box



"Yellow" box



Helle Damkjær

Elegance par excellence expressed in exclusive products which are created in a sensual and organic idiom.

The Danish designer and ceramicist Helle Damkjær is a perfect example of how esteemed designers today work with many different categories of design. Her natural sense for timeless aesthetics has already resulted in successful collaborations with luxury brands in New York, Tokyo, Paris and Copenhagen.

Helle Damkjær's work include home accessories, furnitures, jewellery and un-ica ceramic.

Thanks to a very global culture having worked in Milan, London and New York and Kyoto, her style subtly merges a graphic and sculptural language with an artistic edge.

Her talent of blending colours, volumes, and spaces illustrates her minimalistic and organic vision of the world.

Also her spiritual approach makes her extremely aware of the power of shapes and their presence in time and space.



"Raw Flower Vessel" sculpture





"Raw Leaf" sculpture



"Trinity" sculpture



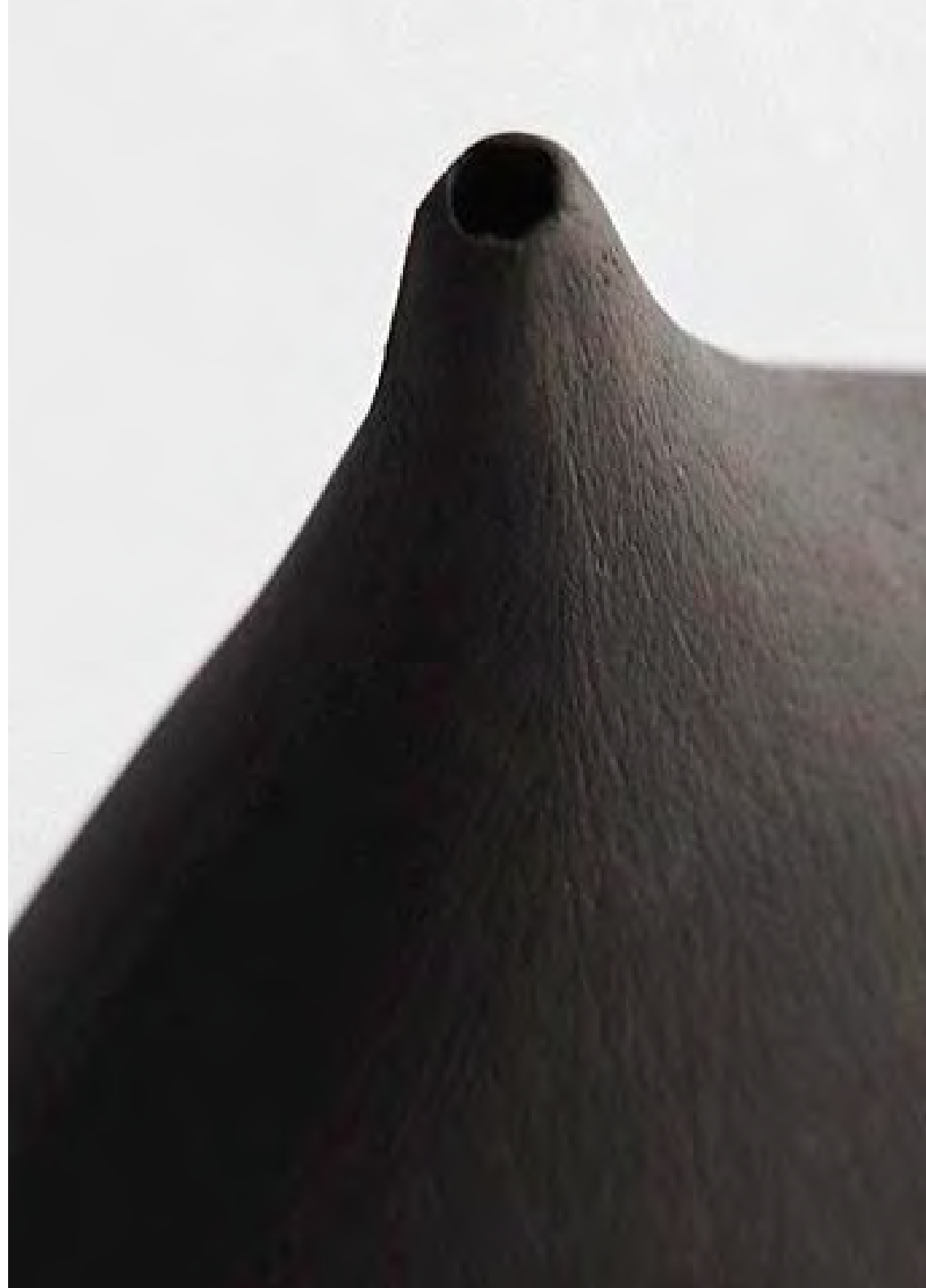
Deep Raw Flower" sculpture



Set of 3 "Charcoal" vases



"Solo"





"Bronze 1"



"Tall Black"



Pair of "XXL" lamps



"Raw Slim " tray





"Captured 1"



"Tall Vessel"



"Captured 2"



"Balance"



"Ruffle 1" sculpture



"Ruffle Vessel" sculpture



"Yin Yang"



"Hug L"



"Off Balance"



"Soft Curves" sculpture



"Raw Vessel" sculpture



"Void" lamp



"#3" lamp



Isabelle **Sicart**

Isabelle Sicart lives and works in Paris. After studying ceramics at the Graduate school of Applied Arts, she joined the Lalique creation studio in 1991. Later, she started developing her very own designs that combine precision and softness. Since 2004, she has been producing and modeling ceramic objects, unique pieces or in limited series. She has also worked with designer Emmanuel Levet Stenne to create two table collections with enameled stoneware feet or top, eg. the "Polka" pedestal table, the "Sirtaki" console and the " Fado " coffee table.



"Rhodes" side tables





"Roma" side table



"Ucelli" side table
in collaboration with designer Francesco Balzano



IN COLLABORATION WITH DESIGNER FRANCESCO BALZANO



Ceramic and bronze plates



Set of 3 candle holders



"Nuvole" sconces



"Uccelli" vase



"Petali" sconce



"Foglia" sconce



"Face" sconce



"Pomone" sconce



"Farfalla" sconce



"Fluxus" sconce



"Elliptica" hanging light



"Fogo" table lamp



"Capri" table lamp



"Opoanax" table lamp



"Nelken" table lamp



"Santorini" lamp

"Pagan" table lamp



Earthenware pots



Pair of lamps





"Lum" table lamps



"Palerma" table lamp



"Trilobe" table lamp

"Otto" table lamp



Earthenware pots



Pair of lamps



"Stromboli" lamp



"Hydra" table lamp



"Symi" table lamp



"Santorini" lamp

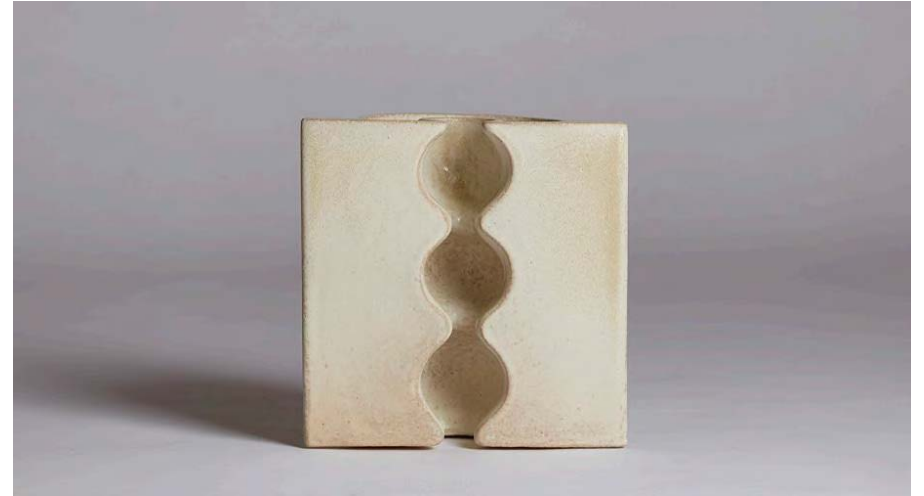


"Syrinx" single flow r vase



"Etna" lamp





"Piselli" vase



"Trilobe" soliflore



"Ipomee" vase



"Guidette" cup



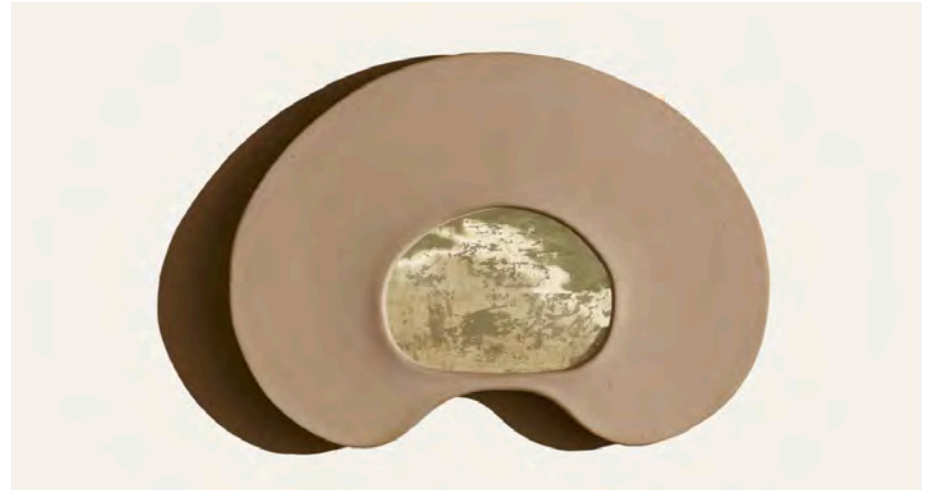
"Fold 2"



"Vermeer" mirrors



"Deia" mirror



"Arpa" mirror





"Stone" stool



Set of coffee tables



"Roma" side table



"Gymnopedies 1, 2 & 3" wall sculptures



"Concha 1, 2 & 3" wall sculptures

Isabelle Sicart & Emmanuel Levet Stenne

In 2013, Isabelle Sicart and Emmanuel Levet Stenne started a 4-handed work collaboration, where their own particular know-how meet and a dialogue between different materials emerges. From this prolific association, an original set of pieces came out, made up of enameled sandstone, lacquered metal or polished bronze, designed especially for Parisian Galerie Carole Decombe.





"Sirtaki" table



"Sirtaki" console table





"Polka" side table

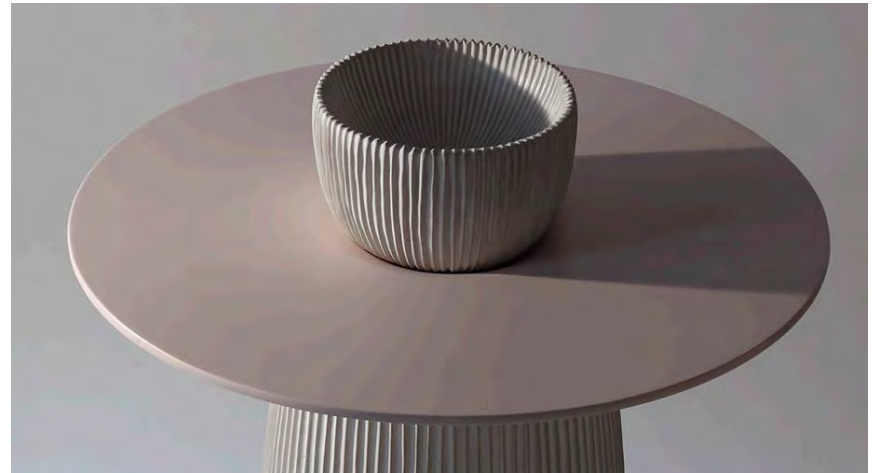




"Polka" side tables



"Polka" side table





"Slepicka" side table





"Volta" side table





Nicolas & Sébastien Reese

Nicolas & Sébastien Reese (Reese Studio) worked, in one case, in the world of fine arts and, in the other, in the film and graphics industry before they united their skills in a decoration studio. Their expertise in the art of classic or contemporary decor is widely recognized by major international architects and decorators (Jacques Grange, Jacques Garcia, CS Decoration in Paris, MHZ in London, Peter Marino and Couturier in New York...).



"Earring #1" mirror



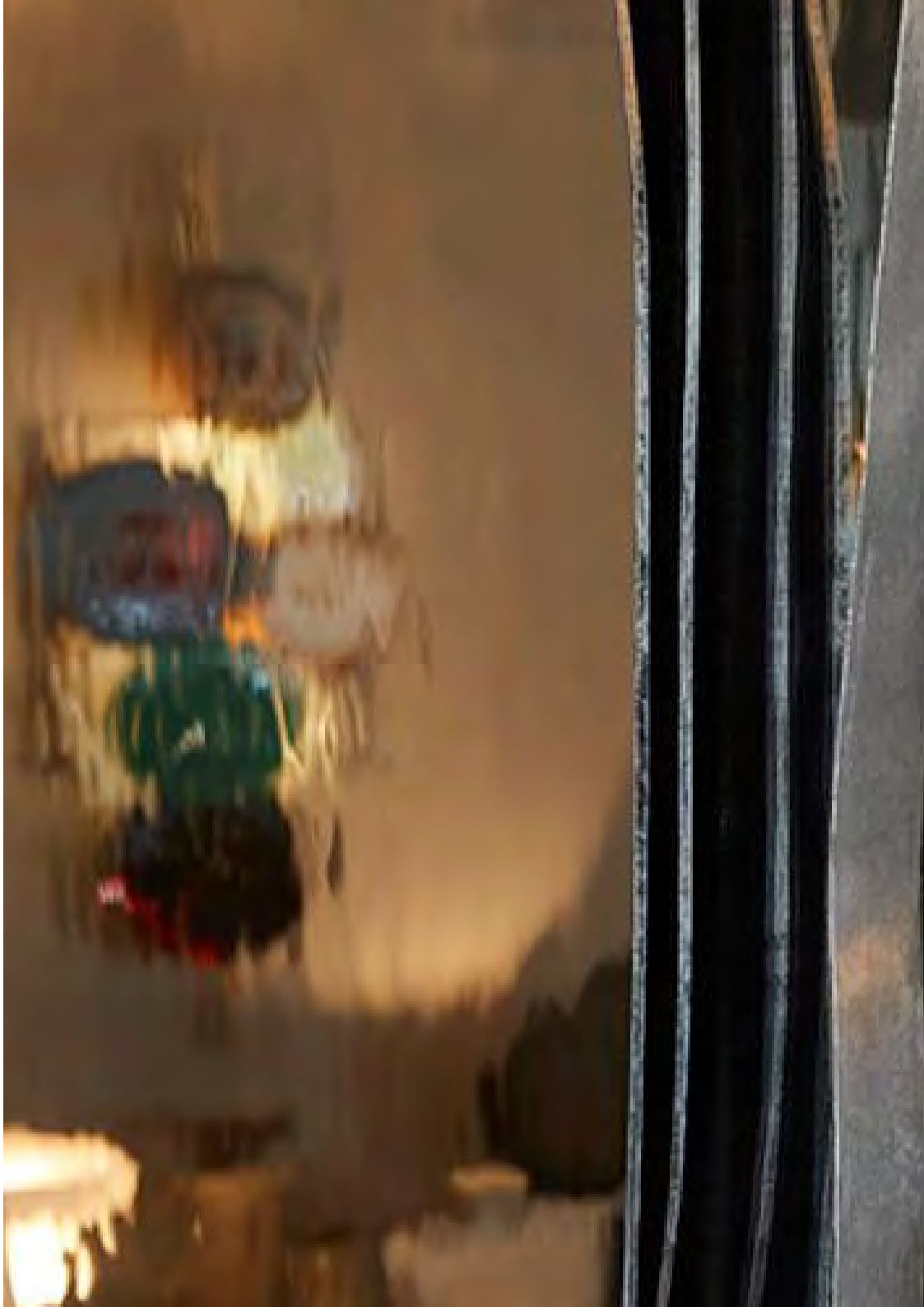
"Earring #2" mirror



"Bosco" mirror



"Bosco" mirror



"Echo II" mirror



"Echo I" mirror

"Cloud #1" mirror



"Acamas" mirror



"La Riviere" mirror



"Studiolo" mirror



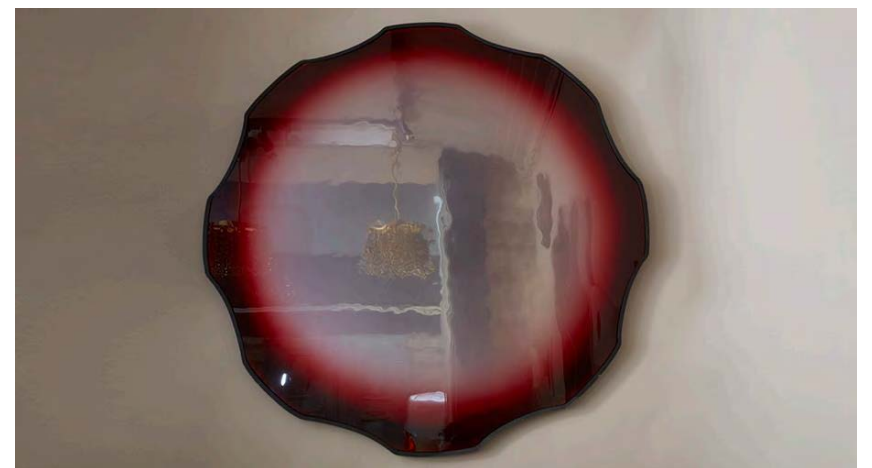
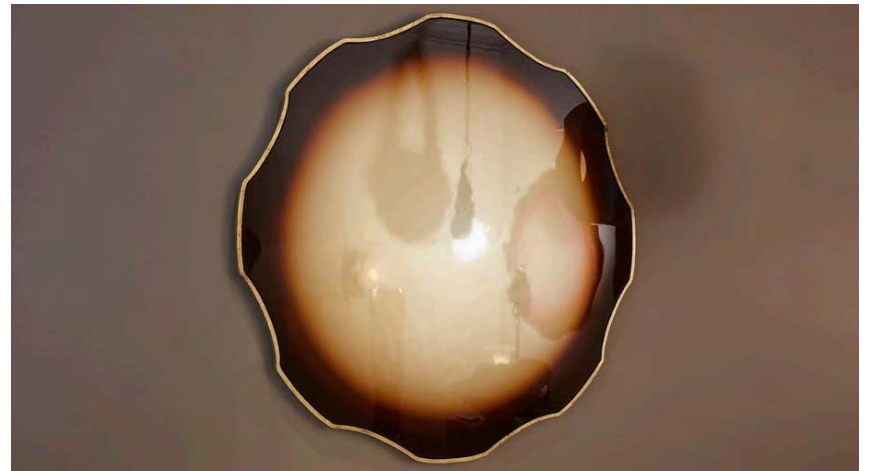
"Green Diamond" mirror



"Splash" mirror



"Blue Square" mirror



"Acamas" mirrors



"Dune" mirror



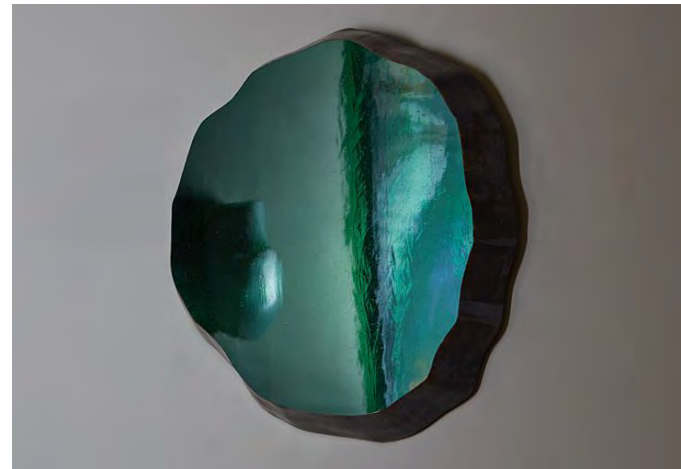
"Melograno" mirror



"Echo III" mirror



"Selva" mirror



"Green Shadow" mirror



"Pink Neve" mirror



"Neve" mirror



"Foglio" mirror



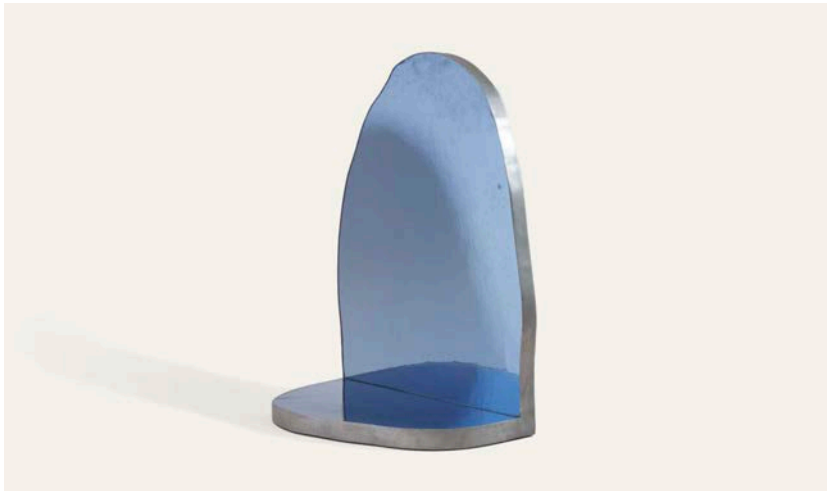
"Gold Foglio" mirror



"Paglia Orba" mirror



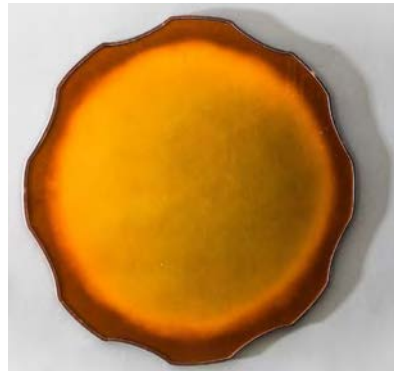
"Through the Looking Glass" mirror



"Rising Cloud" mirror



"Palaja" mirror



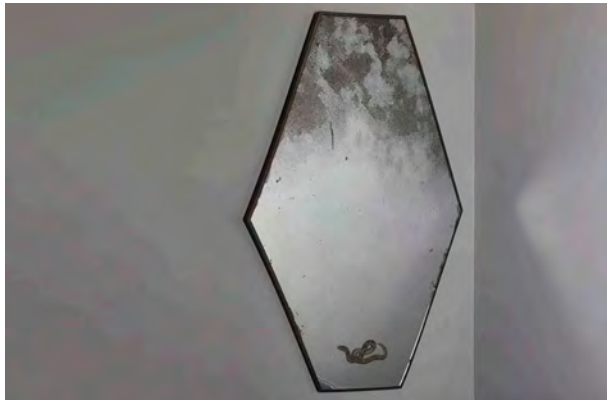
"Acamas" mirrors



"Cloud 4" mirror



"Cloud 8" mirror



"Desert" mirror



"Phainō" mirror



"Vermeer" mirror



"Deià" mirror





"Nopal" mirror



"Flor" mirror



Set of coffee tables



"Lou" coffee table



Chandelier





NOUE

Charlotte Winné and Ludovic Buron are a creative couple who blend arts and crafts with design. Both trained in arts and crafts at the Ecole Boulle, they have joined forces under a common signature: NOUE.

Together, they create works that combine cabinetry and bronze mounts: lighting fixtures or furniture pieces, somewhere between art craftsmanship and design. In September 2023, on the occasion of Paris Design Week, they exhibited their work for the first time at the gallery: a hanging light, a ceiling light and the “Cap” table lamp in brass and rosewood.

"Dune" table lamps



"Dune" mirror



"Cocotte" bowl



"Exercice" armchair



"Exercice" chair





"Cocotte" hanging lights





"Elytre" sconce





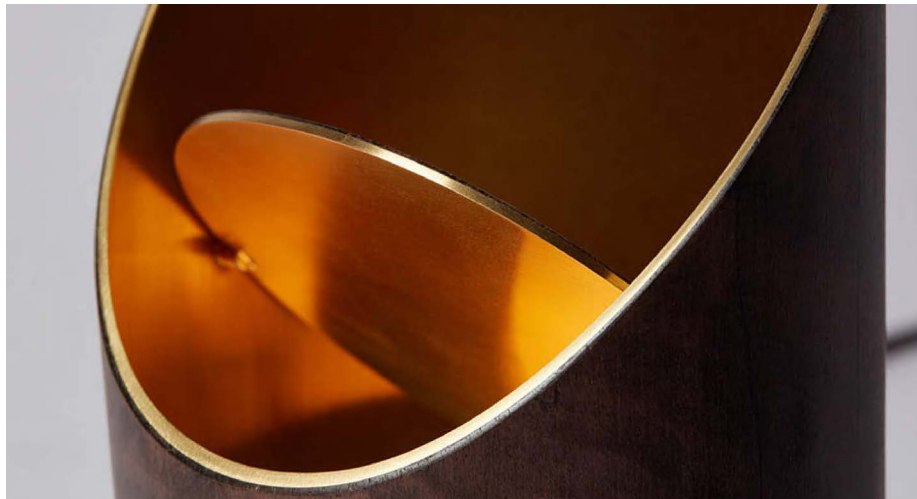
"Nasse" hanging light



"Cap" table lamp



"Rai" ceiling light





Patricia Roach

Patricia Roach established her artistic credentials as a sculptor, working primarily in cast bronze. Initially a painter, she soon felt the desire to produce three dimensional work, being particularly drawn to primordial and biomorphic forms. Patricia soon followed in the footsteps of her father, sculptor Harold Roach, whose looming painted steel works can be found both in private collections and outdoor public spaces throughout the country.

Patricia Roach's anthropomorphic pieces are instantly recognizable and have long been appreciated by established interior designers and art savvy collectors throughout the world. She has the unique ability to captivate her audience by successfully blending art and function with the permanence of bronze.

Her pieces have been featured in significant projects around the globe and have been frequently published in many prestigious publications including Architectural Digest, Veranda and Belle, as well as many important international magazines. Patricia's sculptural vessels and lighting fixtures, in the form of table and floor lamps, share a sensuous and undulating rhythm, easily juxtaposed in environments of various periods and styles.

Patricia Roach Bronze Works are presented in galleries in the USA (Jean de Merry, Amaree's). Galerie Carole Decombe is happy to present her work for the first time in Paris.



"Indu" vessel



"Patrizia" vessel



"Selena" vessel



"Dionne" vessel



"Stella" lamp

Romain Paris Garnault

Romain Paris Garnault set up his workshop in 2022 at the foot of the Pyrenees, in the heart of a woodland and forest landscape. Here, he sculpts one-of-a-kind furniture and objects, carved directly from sections of tree trunks, seeking above all to create sculptures for living, somewhere between craft, art and design, magnifying the very nature of the material in all its sensuality. Most of the wood used is local, reclaimed and carefully and ethically selected from pruned trees. Romain is self-taught, and his creative process is intuitive, leaving plenty of room for serendipity. The object takes shape as it goes along, a compromise between the cracks and knots that animate the wood, functionality and the desire to sublimate the grain pattern unique to each trunk, thus revealing the “inner beauty” of a tree in all its individuality.





"Stethos" chair





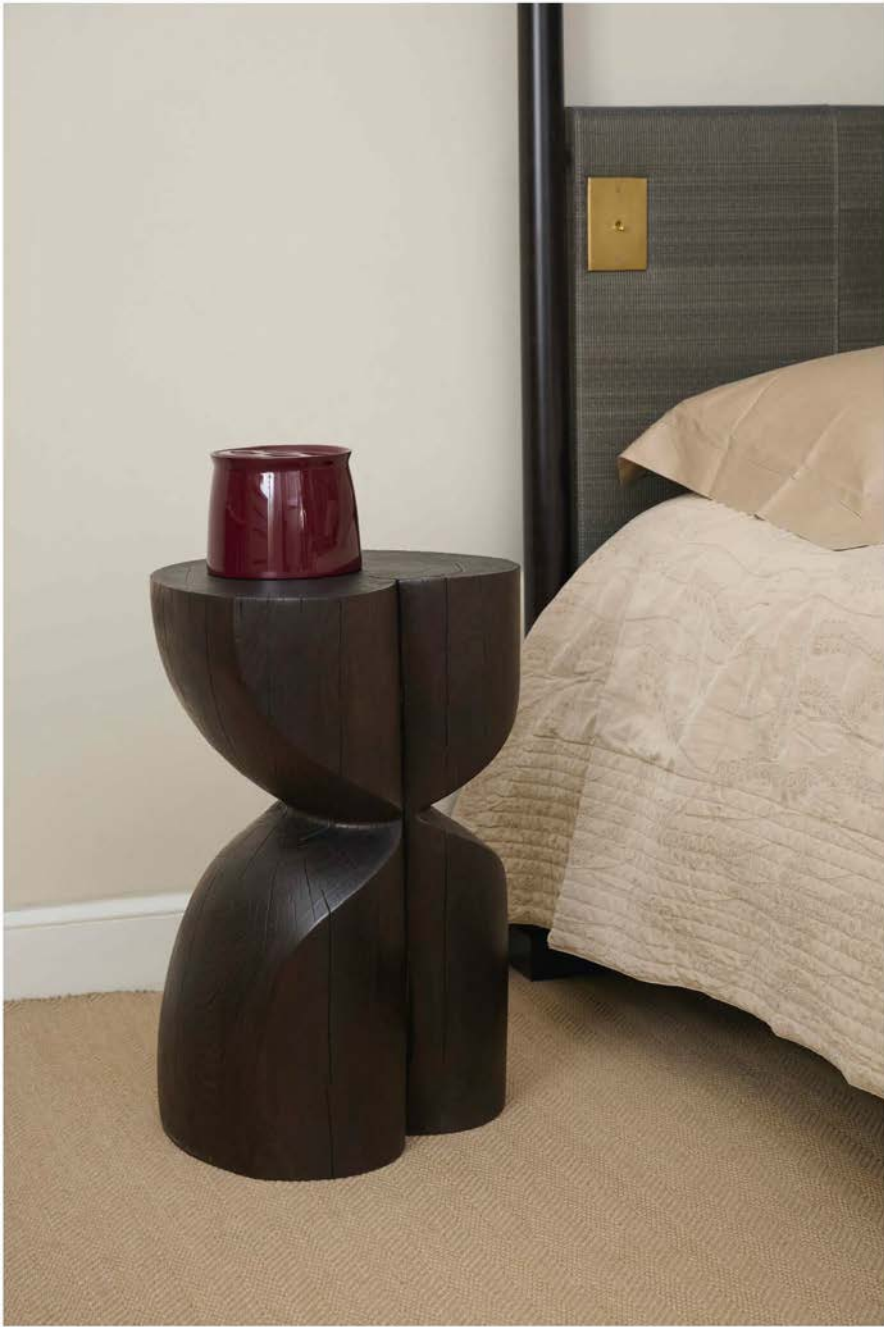
"Phylaxes" side table



"Delphis" chair

"Koniklos" chair





"Agape" side table



"Artemis" side table



"Lenka" bench

"Myko" easy chair



"Kyos" wall sculpture



"Kampe" stool



"Kurtos" side table



"Lukaina" coffee table



"Didumos" stand



"Koulouri" chair



Sophie **Maarek**



Sophie Marek is a French ceramic artist who lives and works in Los Angeles.

After a career in fashion, she discovered ceramics. Inspired by the harmonious shapes and textures of nature, she cultivates an organic style characterized by fluid lines and textures. Infused with a touch of French elegance, her creations embrace organic forms that weave a modern, cozy narrative into every room, lamp or vessel.



"Rebirth" totem



"Pod" vases



"Infinity" table lamps



"Timna en 5" sconce



"Oceane" table lamp



"Timna en 5" sconce

Contact & Inquiries



30 rue de Lille, 75007 Paris
carole@decombe.com | cecile@galeriecaroledecombe.com
Tel. 01 40 20 00 12
Port. 06 75 04 27 05

—

Los Angeles, Venice
carole@decombe.com | lorraine@galeriecaroledecombe.com
Port. 310 467 70 36 | 424 436 9289

www.galeriecaroledecombe.com

© Jeremy Josselin
© Olivia Fougérol